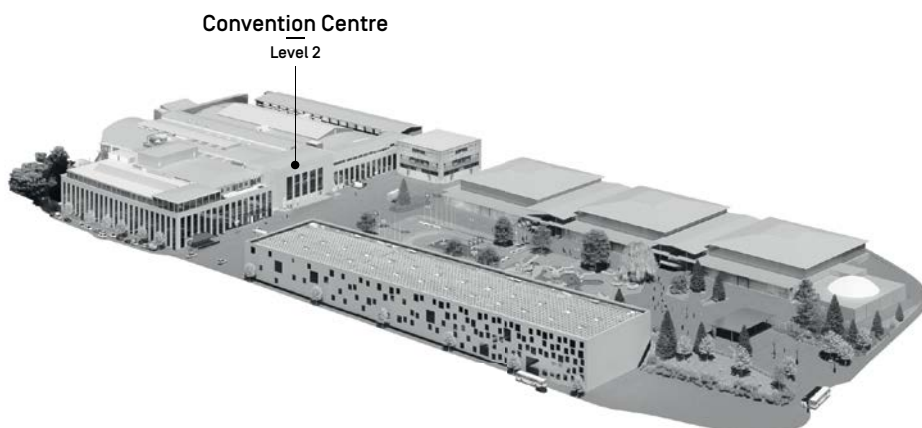
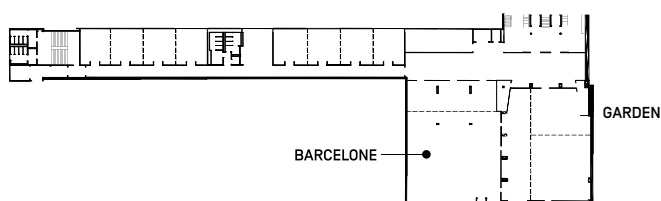


The Barcelona room is a versatile, modular space, primarily designed for conferences, meetings and catering events. It is equipped with a movable partition, allowing for a separate reception area. Directly connected to the Saint-Moritz room, it offers all the facilities needed to host conferences, catered events or exhibitions. With their movable, soundproof partition walls, the two spaces can be seamlessly merged into a single reception area.

## FEATURES

|                   |                       |
|-------------------|-----------------------|
| Level             | 2                     |
| Total usable area | 500 m <sup>2</sup>    |
| Height            | 2.9 m - 3.3 m         |
| Floor covering    | Parquet               |
| Floor load        | 300 kg/m <sup>2</sup> |
| Lift access       | Yes                   |
| PRM access        | Yes                   |



Exams  
70 seats



Training  
190 seats



Theatre  
370 seats



Banquet  
350 seats



Cocktail reception  
450 seats

## INFRASTRUCTURE & EQUIPMENT

### INFRASTRUCTURE

- Direct access from underground car park and central hall
- Dynamic signage with welcome screen
- Adjacent area for coffee breaks, meals, cocktail receptions and exhibitions
- Finishing kitchen available on request
- 25 attachment points, each with an 80 kg/p capacity
- Heating and ventilation system
- High-speed Wi-Fi
- 3 toilet blocks (women, men, PRM) on the same floor

### GOODS LIFT

- Dimensions : 3.80x2.35x2.45
- Load : 5000 kg

## TECHNICAL SPECIFICATIONS

### PROJECTION

#### WALL-MOUNTED DUAL PROJECTION SYSTEM INCLUDING :

- 2x 4400 lumen video projectors:  
Panasonic PT-VZ470, 1920x1200 resolution
- 1x Datavideo SE-650 console; inputs: 2x HD-SDI, 2x HDMI; outputs: 1x HD-SDI, 1x HDMI (+1x HDMI multi-view); supported resolutions: 1080i [50/59.94/60 Hz], 720p [50/59.94/60 Hz]

### CONNECTIONS

- Control room >< Garden Beamer: 1x SDI
- Control room >< Courtyard Beamer: 1x SDI
- Control room >< Stage: 2x SDI

### LIGHTING

- Standard dimmable hall lighting

### SOUND

#### MIXING

- 1x Behringer X32 console; 16 mic/line inputs; 8 line outputs; 16 mix buses; 6 matrix outputs; 8 DCA groups
- Supplied with Behringer S16 remote rack; 16 mic/line inputs; 8 outputs

#### AUDIO DISTRIBUTION

- 6x Yamaha IF2205W 2x5-inch, 90x60° ceiling-mounted speakers (horizontal setup)
- 1x Yamaha XMV8140 Power Amplifier [8x140 W]
- 1 x Yamaha Matrix MTX5-D Dante
- 2x Shure MX418 lectern microphones
- Additional handheld and headset microphones available on request