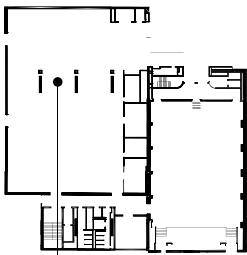
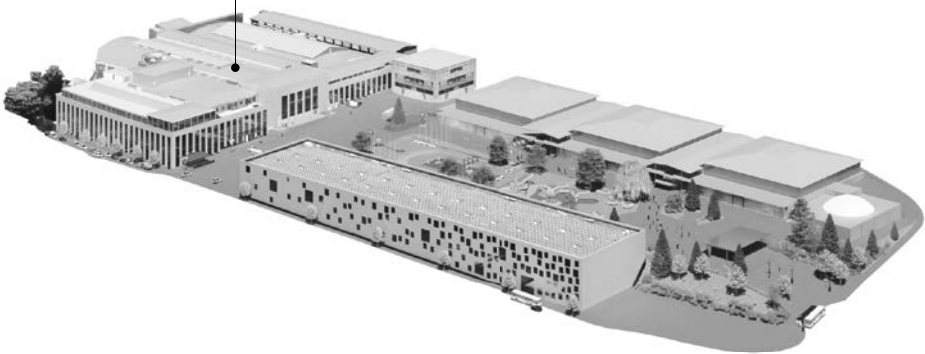


The Forum is a pleasant, naturally lit space that can be used as an exhibition space or for catering purposes, such as cocktail receptions or coffee breaks, during conferences or corporate events. Its central location promotes networking and facilitates the smooth flow of participants throughout your events. The Forum is directly accessible from the lifts and main staircases. It also features three offices that can be used for a variety of purposes, including as an organiser's office, storage area, or dressing room. Mobile facilities are available to create a cloakroom, reception area, or even a workspace depending on your needs.



FORUM

Convention Centre
Level 3



FEATURES

Level	3
Total usable area	840 m ²
Height	2.4 m - 4.9 m
Floor covering	Tiles
Floor load	300 kg/m ²
Lift access	Yes
PRM access	Yes



Banquet
540 seats



Cocktail reception
600 places

INFRASTRUCTURE & EQUIPMENT

INFRASTRUCTURE

- Direct access from underground car park and central hall
- Dynamic signage with welcome screen
- 3 offices available for organisers, storage, or dressing rooms
- Finishing kitchen available on request
- Heating and ventilation system
- High-speed Wi-Fi
- 3 toilet blocks (women, men, PRM) on the same floor

GOODS LIFT

- Dimensions : 1.98×2.20×2.49
- Load : 2'500 kg