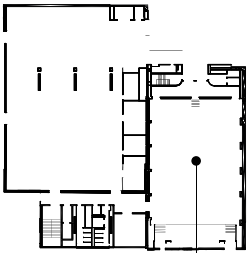




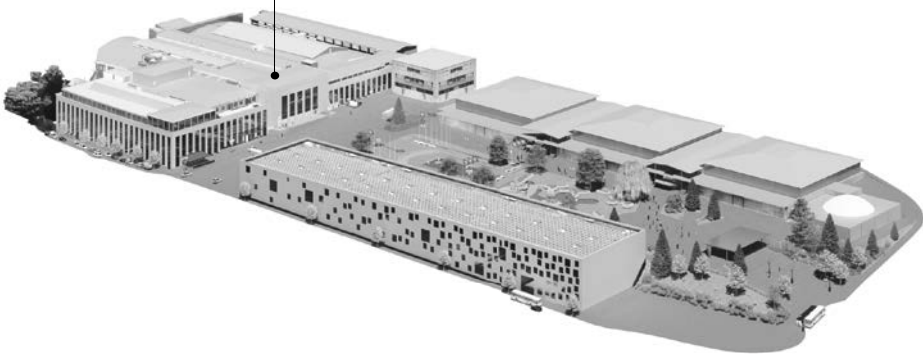
The Rome Auditorium is equipped with state-of-the-art technology. It features 600 fixed seats, each with a retractable shelf and power outlet [every other seat], and offers stunning views over the Beaulieu Gardens, the Alps, and Lausanne Cathedral. Located at the entrance to the third floor of the main building, the auditorium enjoys direct access to the Forum: a dedicated space for coffee breaks, banquets, receptions, and exhibitions.

## FEATURES

Level	3
Total usable area	520 m <sup>2</sup>
Height	6.4 m
Floor covering	Carpet
Floor load	500 kg/m <sup>2</sup>
Lift access	Yes
PMR access	Yes



ROME  
Convention Centre  
Level 3



Theatre  
600 seats

## INFRASTRUCTURE & EQUIPMENT

### INFRASTRUCTURE

- Direct access from underground car park and central hall
- Dynamic signage with welcome screen
- Adjacent area (Forum) for coffee breaks, meals, cocktail receptions and exhibitions
- Fixed 11x3 m stage for presentations and addresses
  - 1 speaker's lectern with two gooseneck microphones
  - 1 wireless handheld microphone
  - 1 presentation remote with laser pointer
- Fixed seating with power outlets (1 in 2 seats) and fold-out writing tablets
- Heating and ventilation system
- High-speed Wi-Fi
- 3 toilet blocks (women, men, PRM) on the same floor

### GOODS LIFT

- Dimensions : 1.98x2.20x2.49
- Load : 2500 kg

### MISCELLANEOUS

#### STAGE CURTAIN

Motorised curtain

- 1x fixed control at the rear of the stage
- 1x fixed control in the control room

#### ROOM

- 1x Control for motorised Venetian and blackout blinds in the control room

## TECHNICAL SPECIFICATIONS

### PROJECTION

#### SINGLE FRONT PROJECTION SYSTEM INCLUDING :

- 1x screen [4.7x8.5 m]
- 1x Christie D20WU-HS projector – 1DLP laser, 1920x1200 resolution, 20,600 lumens
- Christie DHS-0.84-1.02 HD lens
- AnalogWay Ascender 16 4K PL graphics processor
- AnalogWay ControlBox

### CONNECTIONS

- Video rack control room >< SDI patch control room: 10x SDI
- SDI patch control room >< SDI patch stage technical area: 10x SDI
- SDI patch stage technical area >< Stage channel: 9x SDI
- Auditorium (floor channel) >< SDI patch control room: 2x SDI

### STAGE LIGHTING

- Front rig: 12 white LED Fresnel spotlights with shutters
- Rear deck: 6 RGBW LED Fresnel spotlights
- Adjustable from the ground via pole
- Control room: 1 ChamSys QuickQ20 lighting console [2 DMX universes, 1024 channels]

### AUDITORIUM LIGHTING

Zoned, dimmable lighting control with DMX compatibility

- 1x mobile control unit available on request
- 1x fixed control on the control room rack

### SOUND

#### MIXING

- 1x Yamaha QL5 digital mixing console: 64 mono + 8 stereo channels, 16 MIX buses, 8 matrix buses, DANTE, 32 analogue IN, 16 analogue OUT
- 1x Yamaha RIO1608-D2 DANTE stagebox: 16 mic/line inputs, remote-controlled preamps
- Connections: 8 line outputs (RIO located stage left in Rome Auditorium); 16 analogue XLR lines between control room and stage

#### AUDIO DISTRIBUTION

The audio system is fully networked via DANTE Supports connection of external analogue or DANTE mixing consoles

- Acoustic system:
- 12x KIVA Line Array speakers (6 per side)
- 4x SB15m subwoofers
- 4x X8 front fill speakers
- 2x X8 stage monitors
- 4x PSI A14-M monitors (control room monitoring)
- 2x PSI A14-M monitors in each interpreting booth [auditorium feed]

#### AUDIO ASSISTANCE SYSTEM

The auditorium is equipped with a TWAVOX audio assistance system, accessible via a dedicated app and secure Wi-Fi connection

- TWAVOX system
- Option to provide 4 iPods with Sennheiser HD 400 Pro headphones