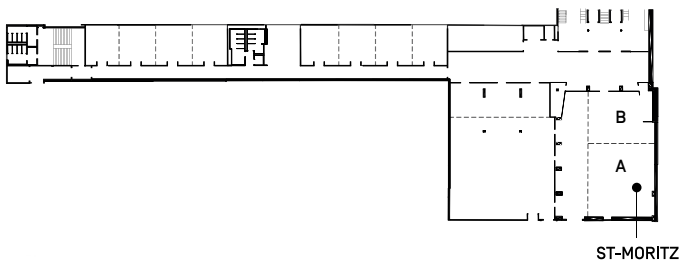


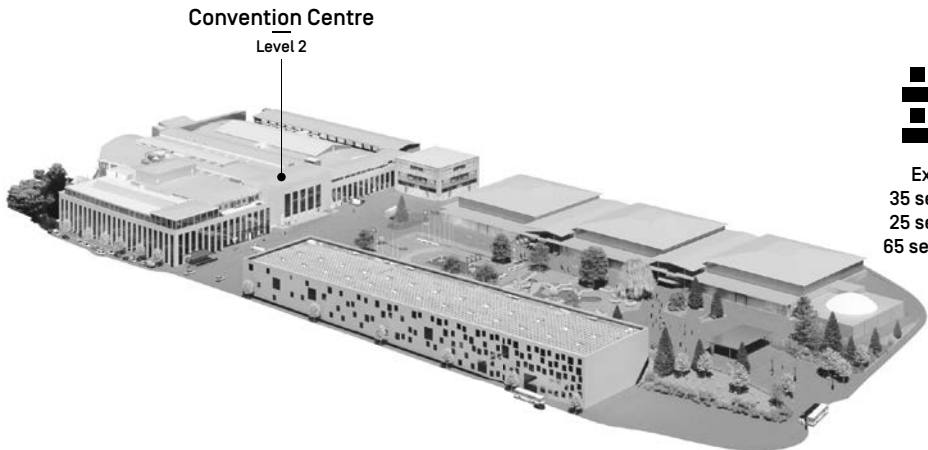


The Saint-Moritz room is a versatile venue that can be divided into several modules, including a dedicated catering area. It is primarily used for conferences and meetings. Guests can enjoy stunning views of the Beaulieu Gardens, the Alps, and Lausanne Cathedral. Directly connected to the Barcelona room, it offers all the facilities needed to host conferences, catered events, or exhibitions. With their movable, soundproof partition walls, the two spaces can be seamlessly merged into a single reception area.



FEATURES

Level	2
Total usable area	260 m ² [A] 160 m ² [B] 430 m ² [AB]
Height	2.9 m - 3.3 m
Floor covering	Parquet
Floor load	300 kg/m ²
Lift access	Yes
PRM access	Yes



Exams
35 seats [A]
25 seats [B]
65 seats [AB]



Training
115 seats [A]
70 seats [B]
225 seats [AB]



Theatre
225 seats [A]
140 seats [B]
450 seats [AB]



Banquet
180 seats [A]
80 seats [B]
310 seats [AB]



Cocktail reception
225 seats [A]
140 seats [B]
430 seats [AB]

INFRASTRUCTURE & EQUIPMENT

INFRASTRUCTURE

- Direct access from underground car park and central hall
- Dynamic signage with welcome screen
- Adjacent area for coffee breaks, meals, cocktail receptions and exhibitions
- Finishing kitchen available on request
- Heating and ventilation system
- High-speed Wi-Fi
- 3 toilet blocks (women, men, PRM) on the same floor

GOODS LIFT

- Dimensions : 3.80×2.35×2.45
- Load : 5000 kg

TECHNICAL SPECIFICATIONS

PROJECTION

DUAL FRONT PROJECTION SYSTEM INCLUDING :

- 2× 3.35 m×1.89 m motorised screens
- 2× 6000 lumen video projectors (BenQ LU785); resolution: 1920x1280
- 1× Datavideo SE-650 console; inputs: 2× HD-SDI, 2× HDMI ; outputs: 1× HD-SDI, 1× HDMI (+1× HDMI for multi-view); supported resolutions: 1080i (50/59.94/60 Hz), 720p (50/59.94/60 Hz)

CONNECTIONS

- Control room >< Stage: 2× SDI
- Control room >< Garden Beamer: 1× SDI
- Control room >< Courtyard Beamer: 1× SDI

LIGHTING

- Front lighting: 4 white LED Fresnel spotlights with shutters
- 1× ETC Colorscape console; 1 DMX output; 40 channels; 20 faders across 2 pages
- Zoned, dimmable room lighting

SOUND

MIXING

- Behringer X32 console; 16 mic/line inputs; 8 line outputs; 16 mix buses; 6 matrix outputs; 8 DCA groups
- Supplied with S16 remote rack: 16 mic/line inputs; 8 outputs

AUDIO DISTRIBUTION

- 6× Yamaha IF2205W 2×5-inch, 90×60° ceiling-mounted speakers (horizontal setup)
- 1× Yamaha IS1112 12» Subwoofer
- 1× Yamaha PX8 Power Amplifier (2×800 W)
- 1× Yamaha XMV8140 Power Amplifier (8×140 W)
- 1 × Yamaha Matrix MTX5-D Dante
- 2× Shure MX418 lectern microphones
- Additional handheld and headset microphones available on request