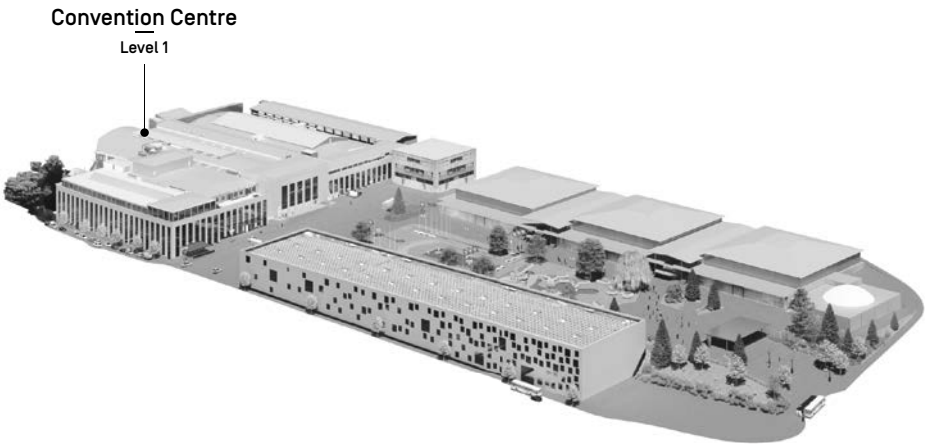
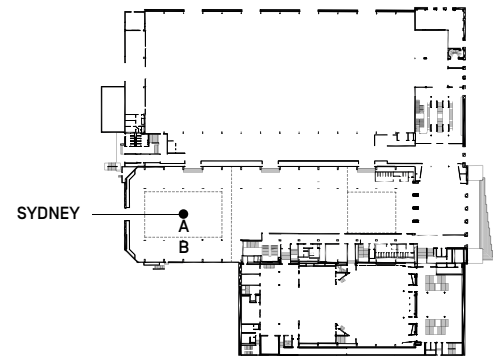


Housed in the second section of Hall 1 on the ground floor of the Convention Centre, the Sydney Room is fully modular. Directly accessible from the central hall, it also features a dedicated unloading bay. With a dual partition system, the Sydney Room can accommodate two different capacities: 490 people in configuration A, and up to 860 people in configuration B. With its vitrified solid oak parquet flooring, the room also offers a spacious multi-purpose area that can be flexibly arranged to combine a conference space with a reception or exhibition area. A rail system with movable partitions allows the adjoining space to be adjusted to suit the specific needs of each event. Hall 1 also includes a second modular space created by a separate set of mobile walls—accommodating up to 230 guests—known as the Seoul Room.



FEATURES

Level	1
Total usable area	460 m ² [A] 1230 m ² [ABCD]
Height	3.8 m
Floor covering	Parquet
Floor load	400 kg/m ²
Lift access	Yes
PRM access	Yes



Training
250 seats [A]
390 seats [AB]



Theatre
490 seats [A]
860 seats [AB]



Banquet
320 seats [A]
540 seats [AB]



Cocktail reception
450 seats [A]
1000 seats [AB]

INFRASTRUCTURE & EQUIPMENT

INFRASTRUCTURE

- Direct access from underground car park and central hall
- Logistics access from the rear of the Hall [dedicated loading bay]
- Dynamic signage with welcome screen
- Ceiling-mounted power rails
- Ceiling-mounted hanging rails - load capacity 50 kg per point, minimum spacing 1.0 m
- Heating and ventilation system
- High-speed Wi-Fi
- 3 toilet blocks [women, men, PRM] on the same floor

TECHNICAL SPECIFICATIONS

PROJECTION

DUAL FRONT PROJECTION SYSTEM INCLUDING :

- 2× 3.90×2.19 m motorised screens
- 2× 6200 lumen video projectors: Panasonic PT-VMZ61EJ, 1920×1200 resolution
- 1× Roland VR50 console; inputs: 2× HD-SDI, 2× HDMI; outputs: 1× HD-SDI, 1× HDMI (+1× HDMI for multi-view); supported resolutions: 1080i [50Hz], 1080p [50Hz]
- 6–8× 55" side-mounted repeater screens; Panasonic Full HD 55" LCD TH-55LFE8

CONNECTIONS

- Control room >< Stage: 2× SDI
- Control room >< Garden Beamer: 1× SDI
- Control room >< Courtyard Beamer: 1× SDI

LIGHTING

- Room lighting is dimmable and managed via tablet with individual zone control. DMX controllers not available.
- 1× ETC Colorsource console; 1 DMX output; 40 channels
- 6× Fresnel LED C100 DMX spotlights

SOUND

MIXING

- Behringer X32 console; 16 mic/line inputs; 8 line outputs; 16 mix buses; 6 matrix outputs; 8 DCA groups

DIFFUSION

- 2× L-Acoustics SYVA L/R + Low
- 2× L-Acoustics SYVA repeater speakers for rear coverage
- 2× L-Acoustics X8 front fill
- 2× Shure MX418 lectern microphones
- Additional handheld and headset microphones available on request